



Driving Business Performance Through
an Engaged, Connected Workforce

NetSuite SuitePeople



SuitePeople provides a family of human resource and payroll management solutions. With a single platform to manage human resources, payroll and financials, organizations are able to eliminate integrations to third party solutions, improve data accuracy, create a more engaging workforce experience and make more informed business decisions better align workforce performance with business performance.

Key Benefits

- Unified NetSuite solution connects HR and payroll data with financial, procurement, project, and planning and budgeting processes, eliminating multiple systems.
- Central place for all employee data reduces the need for reconciliation and integration.
- Automatic U.S. payroll calculations and tax liability payments improves paycheck accuracy and reduces compliance risk.
- Support business agility with insightful HR and payroll analytics.
- Ability to create, monitor and evaluate goals in a single place to drive better employee engagement and outcomes.

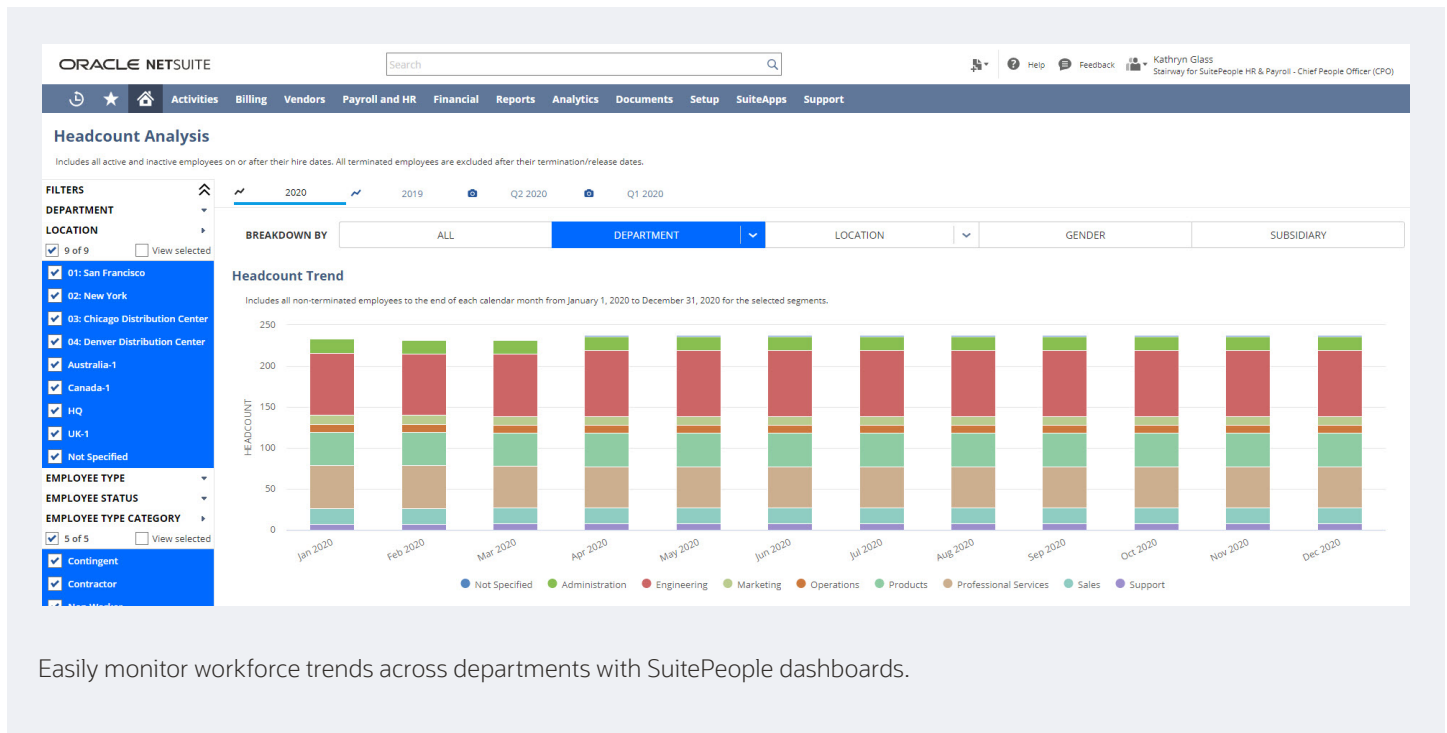
Better Decisions With People Analytics

Payroll and headcount expenses are some of the largest expense categories for any business. When using multiple solutions for accounting, payroll and HR, it becomes difficult to see all of this information in a single place to make more informed decisions. With SuitePeople's unified design, analytics becomes much easier and insightful for all decision makers.

- **Standard KPIs and Reports** – Over 100 reports and 15 key performance indicators (KPIs) complete with the ability to build your own.
- **Data Visualizations** – Ability to graph and chart data with full drill down from summary to detailed source transactions and records.
- **Real-time Data** – Greater visibility and control of payroll costs and headcount in real-time.

A More Engaging Employee Experience

Whether you are an HR leader, financial leader, a manager or an employee, getting your job done and being productive makes for a more engaging experience with your company. Many HR studies have concluded there is a direct correlation to high levels of engagement with retention. Since SuitePeople is native to the NetSuite platform, an employee can log into one system to run a trial balance, pay vendors, review a paycheck, request time off, initiate a promotion, view a dashboard and recognize teammates for a job well done. Performance management empowers employees to create goals, and monitor progress with real-time updates to keep them engaged, focused and productive.



Automation Improves Accuracy

With a unified approach to HR and payroll, SuitePeople automates more business processes by reducing manual data entry and reconciliations. HR and payroll data is automatically available to the rest of the suite and enables managers and employees to keep their profiles up to date for better data accuracy and integrity.

- **Payroll Liability Payments** – Automatically create AP vouchers to pay taxes, benefit providers and other liabilities.
- **Onboarding Automation** – Procure equipment and other property for new employees and include it in their onboarding checklist.
- **Employee and Manager Self-Service** – Enable employees and managers to keep their profiles and their team's data up to date.
- **Performance Reviews** - Employee goals are automatically updated from actual business results and added to performance reviews.

SuiteSuccess for SuitePeople

NetSuite has a deep understanding of the challenges of managing a workforce. SuiteSuccess for SuitePeople takes a holistic approach to the problem and productized domain knowledge, leading practices, KPIs and an agile approach to product adoption. The benefits of this are faster time to value, increased business efficiency, flexibility and greater customer success. Customers are equipped to make the most of their NetSuite investment quickly as they see rapid and real business benefits.